

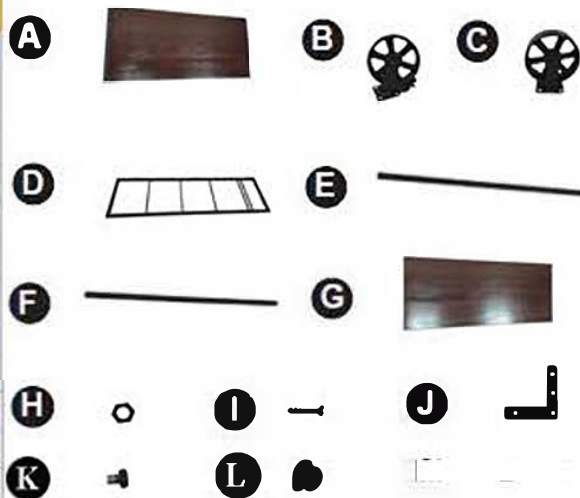
ASSEMBLY INSTRUCTIONS

WHLRKBK242

PARTS LIST

A. Bottom Shelf	X1
B. Fixed Wheel	X2
C. Braking Wheel	X2
D. Side Panel	X2
E. Square Connector	X2
F. Round Bar	X1
G. Top Shelf	X1
H. Nut	X16
I. Long Screw	X10
J. Corner Bracket	X8
K. Short Screw	X32
L. Cap Nut	X4
M. Allen Key	X1

Wrench Not Included



Step 1. Flip over Bottom Shelf (A). Secure Fixed Wheels(B) to one side, and Braking Wheels(C) to the other side by using 16 Nuts (H).



Step 2: Fix Side Panels (D) to both sides of the Bottom Shelf (A) by using 4 Long Screws (I). Then secure the Side Panel and Bottom Shelf by using 8 Corner Brackets (J) (2 on each corner) and 32 Short Screws(K).



Step 3. Secure Side Panels by attaching Square Connectors (E) to both sides using 4 Long Screw s(I). Then add Round Bar (F) to the middle and secure it with 2 Long Screws (I).



Step 4. Place Top Shelf(G) on top of the Square Connectors (E) and secure it with 4 Cap Nut (L) to complete the assembly.



NOTE: Hardware may loosen overtime. Periodically check that all connections are tight.
Clean with soft, dry cloth. To protect finishing, avoid using chemicals and household cleansers.

Note: Wrench Not Included