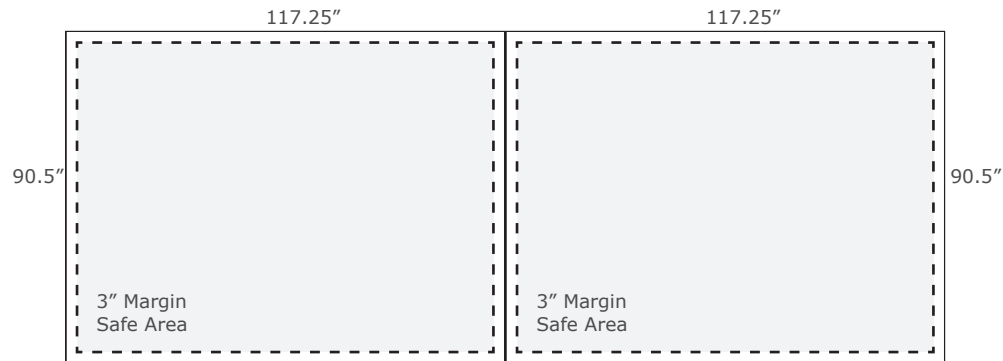


# SPECIFICATIONS FOR SUPPLYING PRINT READY ARTWORK



## **20FT BACKLIT LED LIGHTBOX**

**Display consists of (2) 10' units.**

***If art is different for each 10' panel please supply two separate art files***

Total Graphic Area: 117.25" x 90.5" (per unit)

Total Safe Area: 111.25" x 84.5" (per unit)

Please include a 3" margin on all four edges where no text, logos, etc. are placed.

*(For Reference Only)*

## **FILE FORMATS**

**.JPG or .PDF**

(.ai, .psd, .eps, .tiff)

## **ART GUIDELINES**

- Files must be CMYK
- All Fonts must be created to Outlines or Supplied with your artwork
- Embed all images and support files
- Resolution must be 150 ppi at full size
- Please view your artwork at full size
- Background color / Image must extend to the edge of the artboard
- Make sure to turn off or delete all other layers on finished artwork before sending and make sure artwork is a flatten file (if using Photoshop).

## **TRANSMITTING FILES**

ONLINE: <https://www.trtbanners.com/uploadartwork>

EMAIL: [sales@trtbanners.com](mailto:sales@trtbanners.com)