

# FLOOR DISPLAY ASSEMBLY INSTRUCTIONS

**CAUTION!** Display contains glass parts! Check for broken glass before assembly. Use precautions to avoid breakage when handling glass parts.

## CHECK PARTS

- 1) Before assembly, be sure that two cartons (one small and one long) were received.

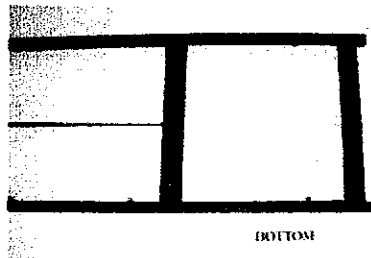
**Note:** Philips head screwdriver is required for assembly.

## ASSEMBLE DISPLAY PANELS

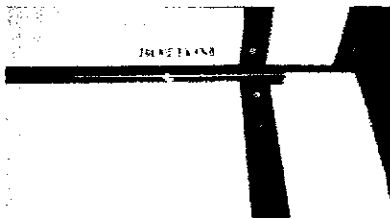
**CAUTION!** Display and parts may be heavy. Two persons are required for assembly.

**Note:** To prevent damage, display should be assembled on a pad or blanket placed on the floor. Display packing materials may be used for this purpose.

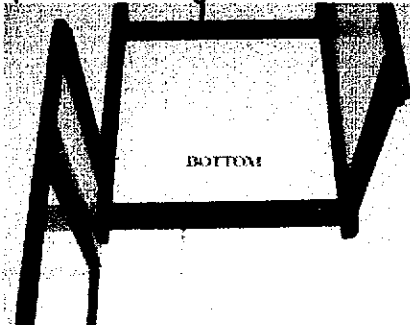
- 1) Place the rear panel of the display flat on the floor with correct panel facing downward.
- 2) Align the left side panel, so that the no screw side faces outward and away from you. Slide the left side panel into the groove of the rear panel as shown. (Be sure that panels are parallel to each other for ease of assembly.)



**Note:** All panels will be assembled from the bottom of the display.

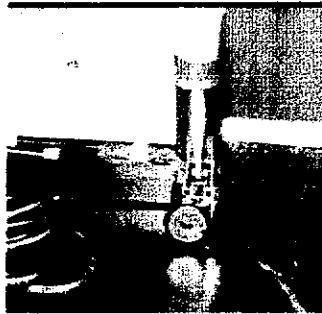


- 3) Align the right side panel so that the no screw side faces outward and away from you. Slide the right side panel into the groove of the rear panel as shown.



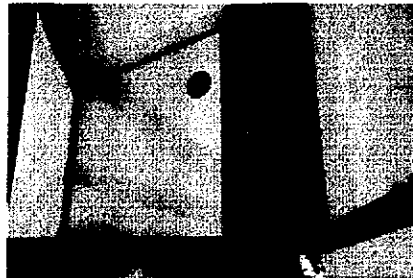
- 4) Align the front panel (with glass door) so that the door lock faces outward and is closest to you. Slide the front panel into the grooves of the left and right side panels as shown.

- 5) Be sure that bottom "legs" of all assembled panels are aligned. Using Allen wrench, tighten four kimi screws to secure panels as shown.



- 6). Keep the cabinet door being closed. Carefully stand display up.

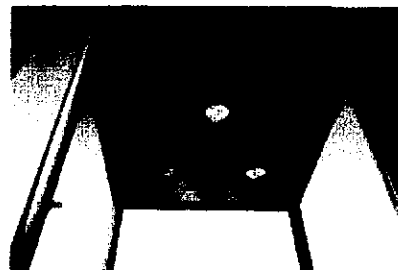
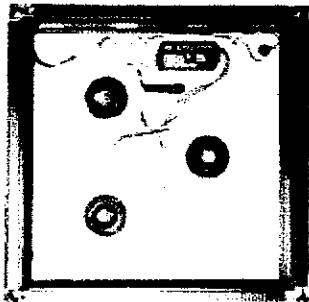
- 7). Open the bottom cabinet and put on the bottom shelf with a hole. The hole is for the cable going through. So, the hole must be near the cable. It is at the right rear corner



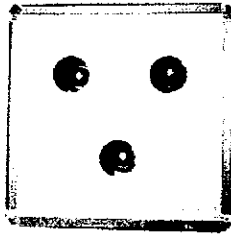
- 8). Put on the deck panel on the top of the bottom cabinet.



- 9) Put on the lighting panel. There is a pair of connectors, mind the right direction of the panel in order that the connector can be connected.



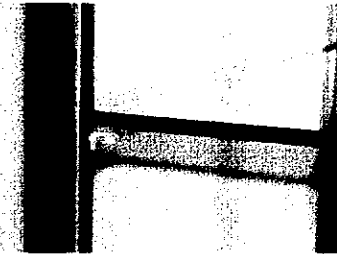
- 10) Put on the top panel to cover the top. The three holes must fit the lights for ventilation. The warning label is in the front side of the cabinet



11) Carefully insert each glass shelf so that it is seated securely on rubber bumper of shelf brackets. Adjust shelf brackets as necessary to ensure that shelves are stable and level.

**NOTE: ADJUST THE SHELF SUPPORT**

Be sure shelf brackets are adjustable so 3 glass shelves will be in desired position (allow enough room between shelf brackets to fit shelves into place). Be sure rubber bumper of each shelf bracket faces upward, and tighten all shelf bracket adjustment screws securely.



12) The display assembled

