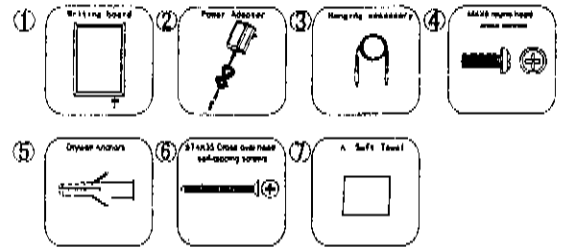


User's Manual FOR THE LED Writing Board –A type

Accessory list

1. Writing board- Packed in bubble wrap, with frame and a low-voltage power cord.
2. Power Adaptor. It is UL/CE certified, input 110V to 240VAC, Output 12V.
3. Hanging accessory-A steel hanging wire. The hanging wire should have two hanging hook with clip attached to the board.
4. 2pcsM4X8 round head cross screws.
5. 4pcsDrywall Anchors.
6. 4pcsST4X35 Cross oval head self-tapping screws.
7. A Soft Towel-A special non-abrasive towel that can wipe out the moisture and handeriting quickly.



Tools Required:

1. Pencil
2. 6 mm drill bit
3. Drill
4. #2 Phillips Screw Driver
5. Tape Measure

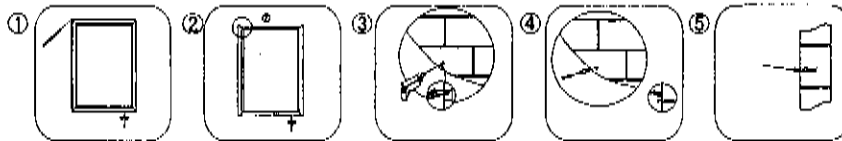


There are two installation methods.

Start with either "Wall Mount" Or "Hanging Mount", and follow the numbers.

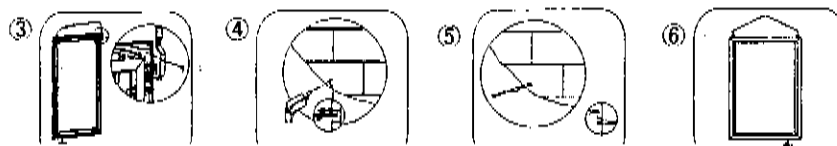
Solution A: Wall Mount

1. Select location for installation
2. Mark a right angle based on the top two corners of LED writing board.
3. Drill out holes in the wall at the marked locations using a M6(6mm diameter) drill bit, the thickness is around 30mm.
4. Insert anchors into the wall. Insert screws into the wall anchors using a #2 Phillips screw driver. Leave a 10mm gap between the wall and the bottom of the screw head.
5. Hang the LED Writing Board on screws.



Solution B:Hanging Mount Installation

1. Remove Hanging Aircraft Wire from packaging.
2. Orient the board based on whether you would prefer the power supply to exit from the top or the bottom.
3. Put the hanging hook into the corner based on the arrow 1 direction, and remove it to the arrow 2 location, then fix the hanging hook with corner by screws.
4. Make a mark on the wall. Drill Out holes in the walls at the marked locations using a M6(6mm diameter) drill bit, the thickness is around 30mm.
5. Insert anchors into the wall. Insert screws into the wall anchors. Leave a 5mm gap between the wall and the bottom of the screw head.
6. Hang the LED Writing Board on screws.

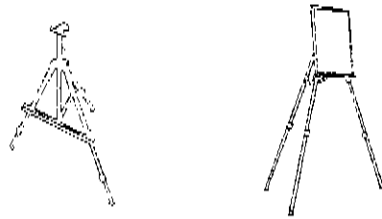


Solution C: Support on Tripod

Be attention, the tripod need to order separately!

- 1.Remove the tripod from package.
- 2.Open the tripod based on the use's manual attached.
- 3.Put the LED Writing Board on the tripod and fix it on.

(The size can be for A2, A3, A4, both in landscape and in portrait, but for A1 size, it only can used in landscape)



Turn On the LED Writing Board

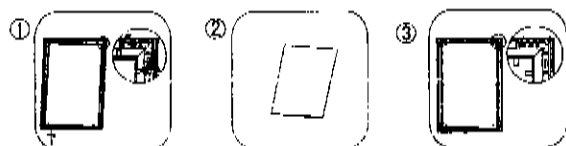
- A.Ensure that the power supply cable is placed in a location that is does not present a trip hazard or will be susceptible to damage.
 - B.Connect the Power Supply to wall receptacle (110VAC to 240VAC).
 - C.Connect the female barrel connector from the writing board to the corresponding male barrel connector from the power supply.
 - D.The LED Writing Board should illuminate immediately and display 12 modes automatically, each mode last 5 seconds.
 - E.Draw or Write on the Board(Make sure to use our supplied markers to draw or write, if finished, please buy the water soluble markers to use)
 - F.Erase with our supplied towel
- To erase your writing, it's to better to spray some water on the panel first, then follow up by wiping clean with the dry cloth which included with each board
- G.Function Button
 - a)Pressing the button for 3.5 seconds around, you can turn on and off the power.
 - b)Each short press shows 12 different Neon Effects
 - c)12 modes as following:
 - 1.Two of color illuminated at the same time, the one not illuminated is running in order.
 - 2.Same with above, but in slower speed.
 - 3.RGB Fade in and Fade Out.
 - 4.Red LED Illumination
 - 5.Red LED Flashing
 - 6.Blue LED illumination
 - 7.Blue LED Flashing
 - 8.Green LED illumination
 - 9.Green LED flashing
 - 10.All colors illuminate, flash quickly
 - 11.Only one of color illuminate a time and running in the same direction
 - 12.Only two of colors illuminate a time and running in the same direction



How to remove /place the black backboard

Our black back board can be removed if you want with transparent fancy effect or want to clean inside. Just follow up following steps:

- 1.Follow arrow direction to open the clips.
- 2.Remove the backboard or placed the backboard
- 3.Close the clips



Maintenance Instructions

The LED Writing Board has been designed to minimize the amount of maintenance required when compared to similar competitive products. The only maintenance occasionally needed for the LED Writing Boards cleaning. We recommend using a glass grade wet tissue and non-abrasive damp cloth to clean the Writing Board. Also, Make sure to use the water soluble markers.