

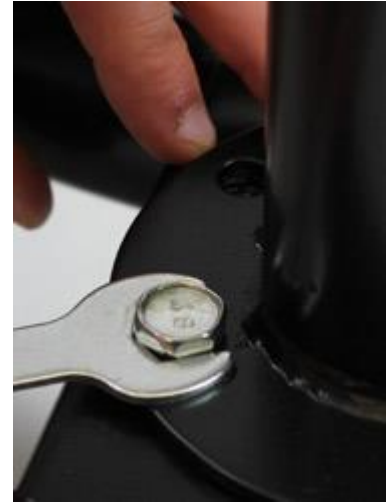
LW28S2 Assembly Instructions



Place metal base face down and screw in all (4) wheels by hand or with provided wrench, then flip base and lock wheels.



Once metal base is right side up, place base pole with round bottom on top of the center of the base, lining up the holes.



Place in all (4) bolts with "48" label on top, and screw in with one of the provided wrenches.



Once base pole is secured to base, slide in the adjustable height pole to the top of the base pole, ensuring the openings are on the same side as pictured.



Insert the large knob into the opening and set adjustable height pole to desired level. Line up both poles and twist the knob all the way in.



Separately, place the shelf face down with the shelf mount bracket on top of it, lining up the holes. Make sure the side of the bracket with two holes (enlarged image) is on the proper side in accordance with the lip.



Screw in short bolts to secure shelf mount bracket.



Line the shelf up on top of the pole, making sure the two picture sides line up.



Use the pictured nut and bolt to secure the base through the upper hole and tighten with provided wrench. Please note the shelf will still be loose at this point.



Twist the knob to lower hole. This knob can be loosened to adjust tilt surface of the display.



Place shelf face down, and line up base plate with predrilled holes. Use short screws to secure in place.



Line up shelf bracket and secondary bracket anywhere on pole, then use four bolts and wing nuts to secure into place. Shelf height can be adjusted at any time.



Place the second shelf top face down, and line up bracket mount with predrilled holes, place washers on top of holes, and secure with long screws.



Line up second shelf bracket and secondary bracket anywhere on pole, then use four bolts and wing nuts to secure into place. Shelf can be adjusted at any time.



Your stand is now complete!