

Easy Step-By-Step Instructions for S355 Elite Lectern Assembly

The Elite Lectern is designed for easy assembly. If you have any questions about assembling or using your new sound system, or if you want more information about accessories, call AmpliVox's customer service line.

The lectern is carefully packed to minimize shipping damage. If your unit was damaged in shipping call our toll-free customer service line or visit our web site at <http://www.ampli.com>

1-800-267-5486

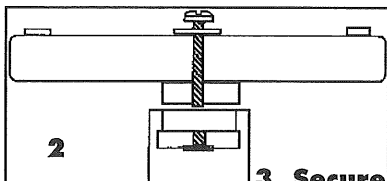


Packing List:

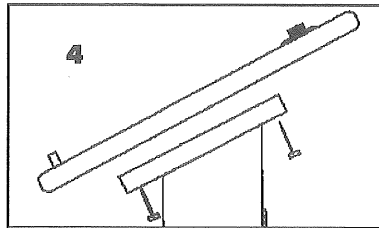
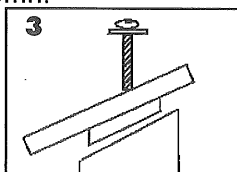
- Lectern Top
- Top Mounting Plate
- Column
- Base
- Amplifier Mounting Plate
- Amplifier (S-805A)
- Amplifier Mounting Bracket (S-1300)
- Hand-held mic (S-2030A)
- 15' Mic cable
- Microphone Mounting Bracket (already attached)
- Gooseneck & mic holder
- 2 large bolts
- 2 large washers
- 4 Phillip's Head screws
- 1 2" bolt
- 4 #8 black screws (w/S1300)
- 2 #4 black screws (w/S1300)

1. Unpack all pieces. Save the packing and the box in case you need to return the lectern for any reason. Make sure you have all the pieces and check for any damage.

2. Attach the column to the base. Place the base on the floor with the block facing up. Take the column and turn it until it drops down over the block; it will only fit one way. Turn the assembly on its side and use one of the large bolts and washers to screw the base to the column.

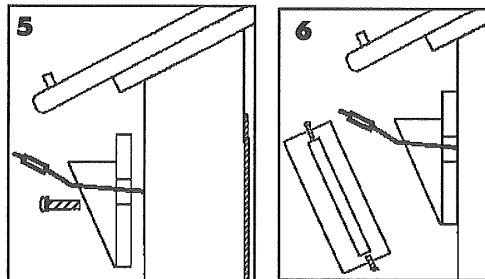


3. Secure top mounting plate. Turn center column and base right-side up. Place the top mounting plate into the column; it will only fit one way. Using the second large bolt and washer, screw the plate to the column.



4. Attach lectern top. Using the 4 Phillip's Head screws attach the lectern top to the top mounting plate as shown above. When the lectern top is attached the book stop should be lower than the attached microphone mounting bracket.

5. Attach amplifier mounting plate. Pull the speaker cable through the hole in the amplifier mounting plate and align the plate on the column. Secure the plate using the 2" bolt.



6. Attach the Amplifier mounting bracket. Using the 4 #8 black screws attach the mounting bracket to the mounting plate; the holes are pre-drilled.

7. Install batteries in amplifier. Refer to the amp instruction sheet for battery installation information.

8. Install Amplifier. The amplifier slips into the bracket; use the 2 #4 screws to secure the amp in the bracket (see figure 6).

9. Attach gooseneck. Screw gooseneck with mic holder onto the mic base.

10. Install Mic. Place mic into mic holder and insert mic plug into "dynamic" jack on amp.

Refer to the S-805A amplifier operating instructions for information about the amp controls.

If you purchased any optional accessories such as a wireless kit, lapel mic, Universal AC Adapter/Recharger, extra speakers, tripods, etc. refer to the instructions packed with them for installation and usage information.

Your Elite Lectern is now complete. Thousands of AmpliVox sound products have been in use since we first began shipping in 1961. We hope you enjoy many years of use from your new Elite Lectern.

Remember, if you have any questions or comments, call our toll-free customer service line.

1-800-267-5486

Optional Accessories

Batteries

S-1430	Alkaline D-Cell Batteries; set of 10	\$25.00
S-1465	NiCad battery pack; 4.5 amp hours	\$165.00

Power Supplies

S-1460	International AC Adapter/Recharger; 110/220 volts; 50/60 Hz.....	\$109.00
S-1462	DC Car Adapter Kit; 12 volts.....	\$43.00

Wireless Kits

S-1600	Wireless Lapel Mic Kit.....	\$308.00
S-1610	Wireless Headset Mic Kit	\$299.00
S-1620	Wireless Hand Held Mic Kit	\$299.00

Microphones

S-2030	Lapel Mic; with 12 ft. extension	\$55.00
S-2040	Headset Mic; with 12 ft. extension.....	\$121.00
S-2030A	Replacement Hand-Held Mic and Cable.....	\$99.00
S-1720	Mic Extension Cord; 25-ft.....	\$65.00

Extra Speaker & Tripod

S-1201	Companion Speaker	\$209.00
S-1080	Tripod for speaker	\$188.00

Lamps

S-1100	Reading Lamp (5").....	\$55.00
--------	------------------------	---------