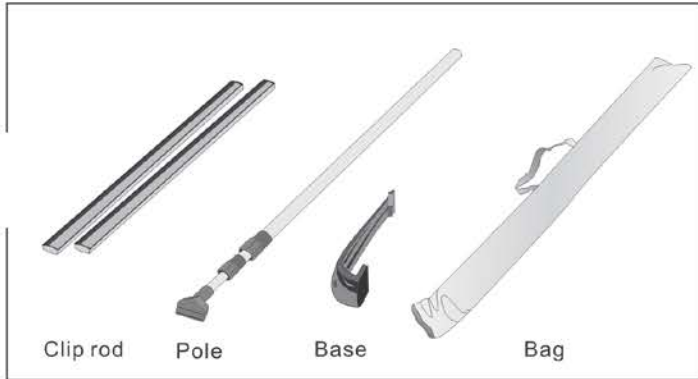


POPULAR L-BANNER

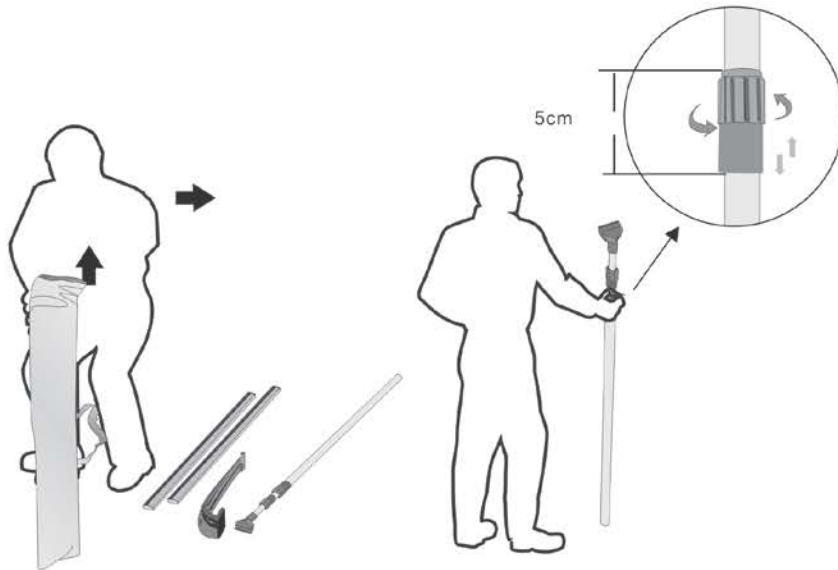
INSTALLATION DRAWING OF L BANNER

1. Parts



2. Draw the parts out of the bag

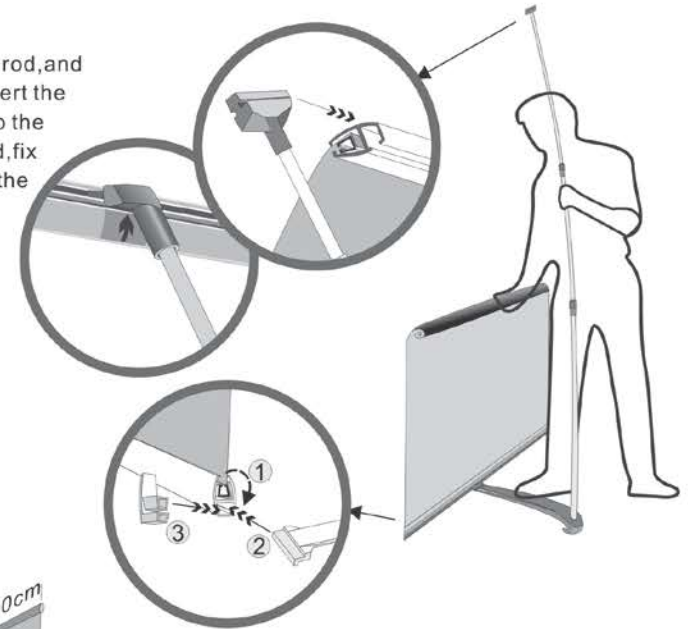
3. Adjust the pole to suitable size, leave 5cms inside the plastic parts.



POPULAR L-BANNER

INSTALLATION DRAWING OF L BANNER

4. Open the clip rod, and fix the picture, insert the top of the pole into the side slot of the rod, fix it in the middle of the clip rod.



5. Fix the base in the middle of the other clip rod. And insert the pole into the hole of the base. Finished.

