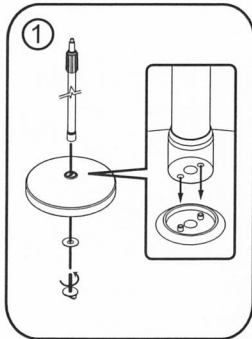
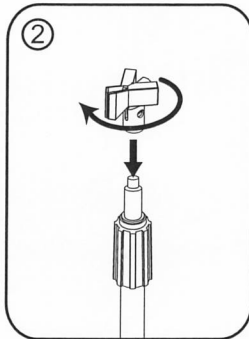


How to use

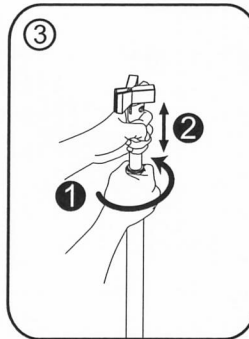
Caution:
Please hold the pole
when make adjustment



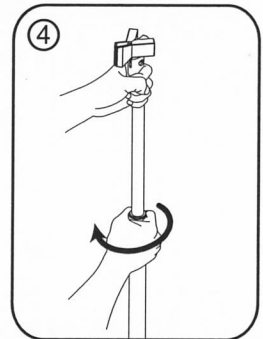
1 Attach pole to weighted base



2 Screw microphone holder to top of pole

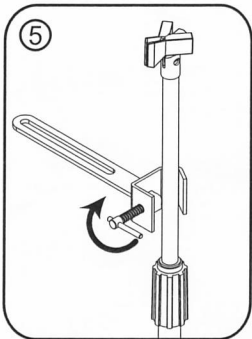


3 Loosen to adjust height

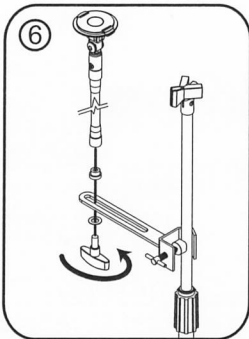


4 Tighten at desired height

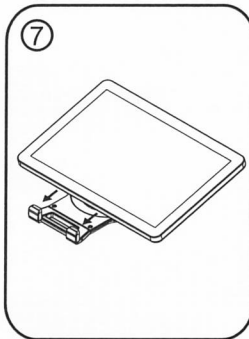
Caution:Please hold the pole when make adjustment



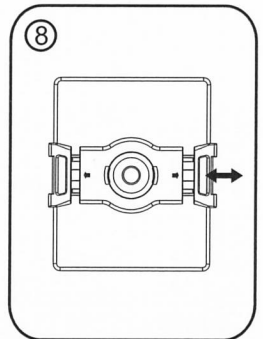
5 Fasten clamp onto pole



6 Attach tablet gooseneck to the clamp

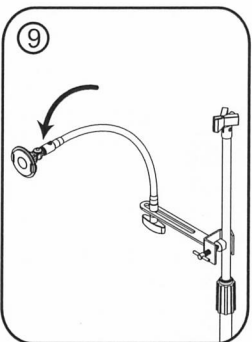


7 Place tablet on one side of bracket

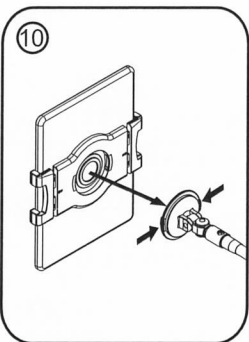


8 Pull open the bracket over the tablet and release

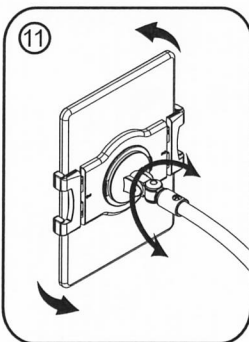
Caution:Please ensure that tablet is securely fixed in.



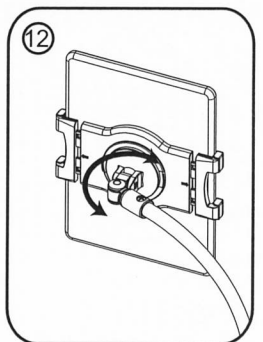
9 Adjust gooseneck to desired position



10 Attach bracket to the gooseneck



11 Rotates 360° and viewing angle adjustment



12 Swivel 180°