

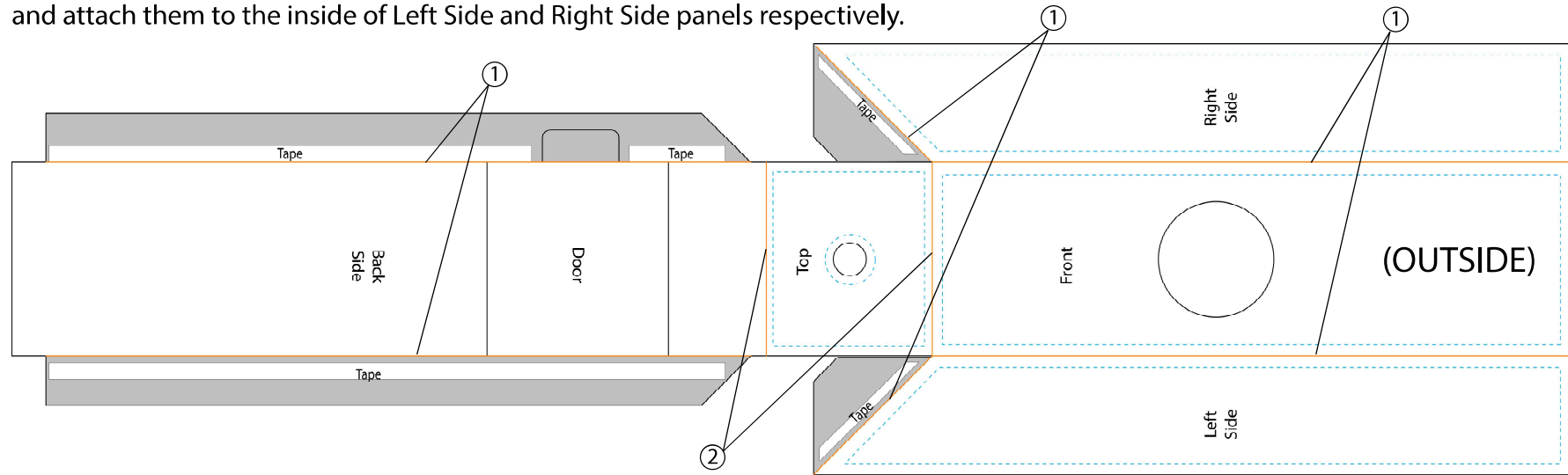
# Assembly Instructions

## Disposable Hand Sanitizing Station

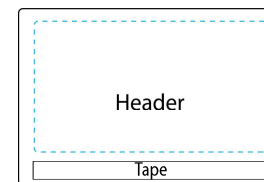
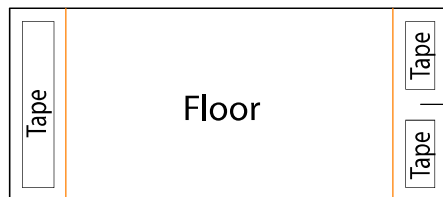
Ver. 04/20

SKU: FGDHANDSS  
FGDHANDPGCP

1. Fold in tabs with tape attached in grey. Fold down Left Side and Right Side along creases.
2. Fold unit in half along the creases in the middle.
3. Peel off protective film on small grey tabs and attach to the back of the Top panel. Peel off the film on the long grey tabs and attach them to the inside of Left Side and Right Side panels respectively.



4. Fold Floor panel along creases, peel off the film on tapes, attach it to the bottom of the unit.
5. Before attach the Shelf inside, fold tabs down along creases and open the back Door. Use your wipe dispenser with the Shelf panel to find the desired position and mark the inside. Peel off the film on tapes and attach Shelf to the marked height.
6. Peel off the film on the Header and attach it to the top back of the unit.
7. Place the wipe dispenser inside and the sanitizing station is ready to use.



Scan QR code to visit the product page:



If you have any questions regarding our products, please visit us at [www.displays2go.com](http://www.displays2go.com) or contact D2G customer service 844-221-3388.

DISPLAYS2GO