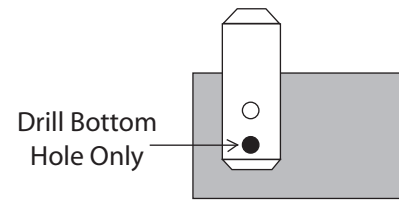
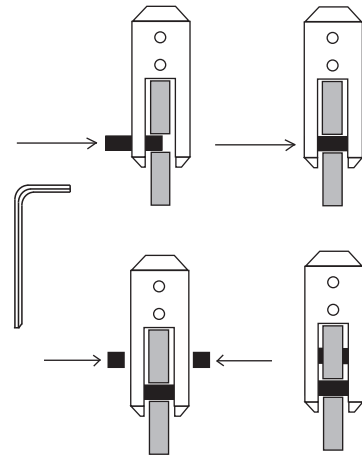


# Mounting Instructions for CMTPSET and CMTP2SIGN

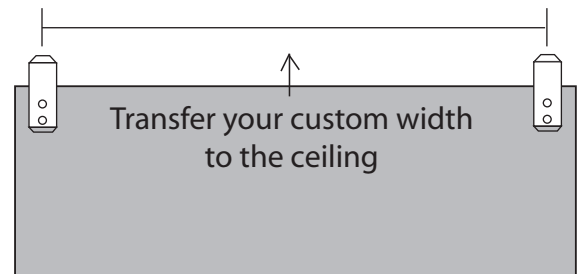
1. Decide where to place the clamps on your sign panel first. Mark LOWER hole location ONLY. Drill a 3/16" hole through panel. Do the same for the other clamp.



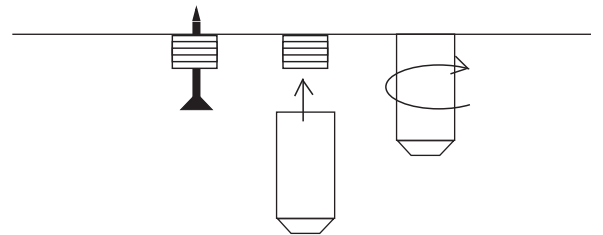
2. Place the clamps onto your sign panel and thread the LONG set screw in the lower hole and through the panel. This screw prevents the sign from falling.



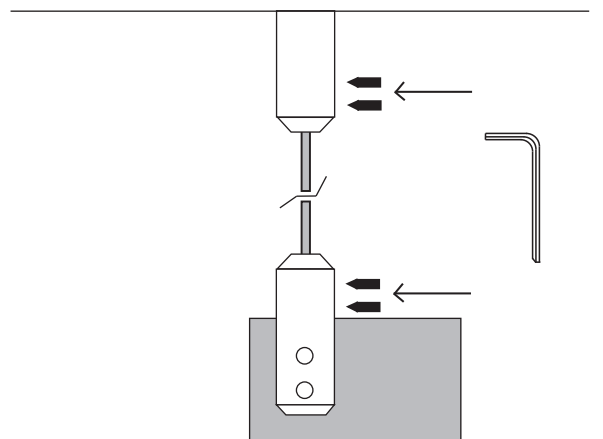
3. Insert the (2) SHORT set screws into each side of the panel clamp to center and stabilize the panel.



4. Measure the clamps from center to center and transfer the dimension to your ceiling.



5. Drill holes in the ceiling for the screws, inserting the wall anchor (if necessary). Place the screw through the brass collar and screw into ceiling. Thread the top cable mount onto the brass collar.



6. Cut the cable with wire cutters to the desired length and insert into the top cable mounts. Secure with the small set screws. Insert the ends of the cables into the cable clamps and secure with the small set screws.

If you purchased the CMTP2SIGN, simply continue these procedures to attach the 2nd sign.