

# CHRGLEDWL Instructions

Rev. 10/19

## Product Description:

### 1. Specification

- a. Input: 100~240V AC, 50/60Hz
- b. Charging Output: 5V DC, Max.: 2.1A
- c. Charging port: 6

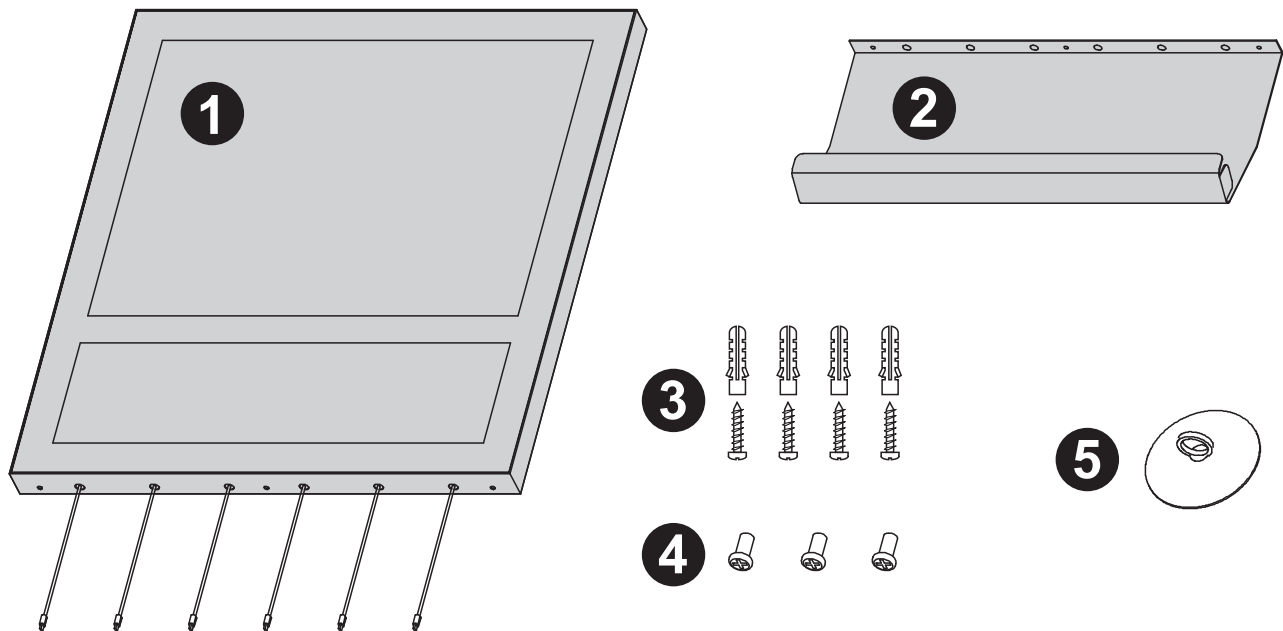
### 2. Compatible Devices

Android devices (Micro USB, Type C), Apple devices (Lightning).

### 3. Working Environment:

- a. Working Temperature: -10 ~ 40°C; Indoor use only
- b. Storage Temperature: -25 ~ 60°C

## Parts:

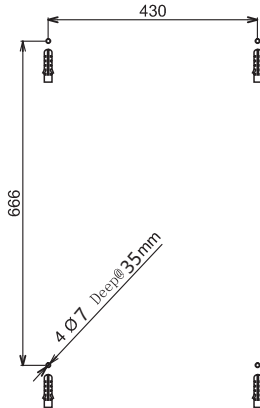


<b>1</b>	Light Box	1 pc
<b>2</b>	Steel Pocket	1 pc
<b>3</b>	Wall Anchor Screw	4 pcs
<b>4</b>	M4x14 Screw	3 pcs
<b>5</b>	Suction Cup	1 pc

# CHRGLEDWL Instructions

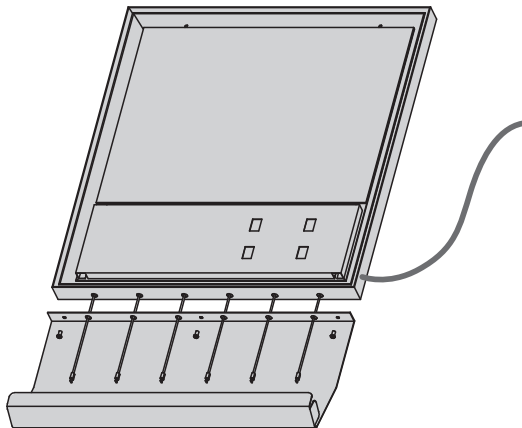
**STEP1**

Drill mounting holes on the wall as the sizes shown below. Insert the plastic anchors into the holes.



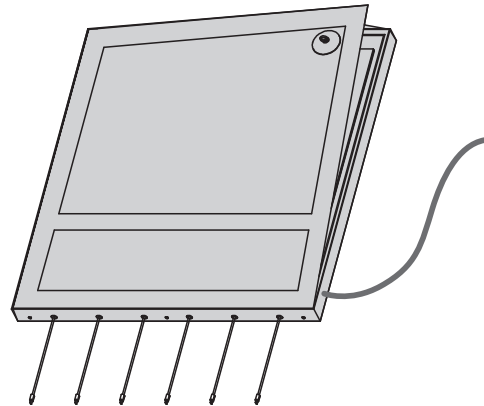
**STEP3**

Place the light box on the table, and insert the charging cables into the corresponding holes in the steel pocket. Fix the pocket using M4x14 screws.



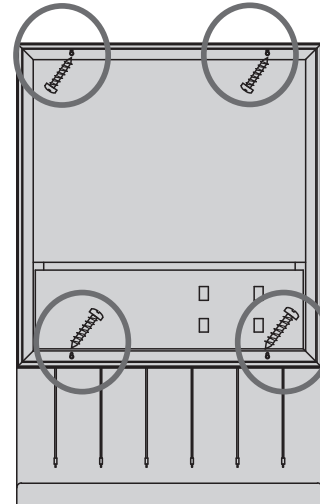
**STEP2**

Remove the lens with the suction cup.



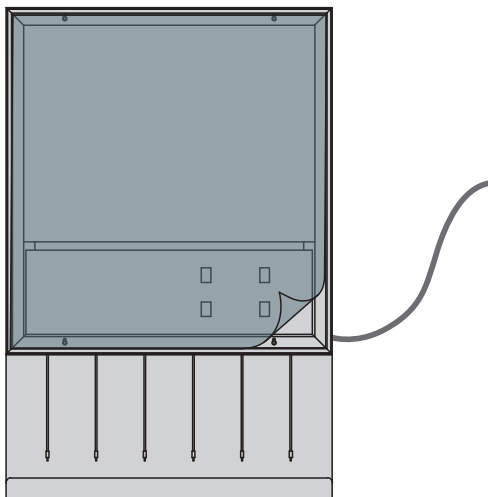
**STEP4**

Hold the assembled light charging box against the wall. Align the plastic anchors with holes on the back of the unit. Securely fix the charging box with anchor screws.



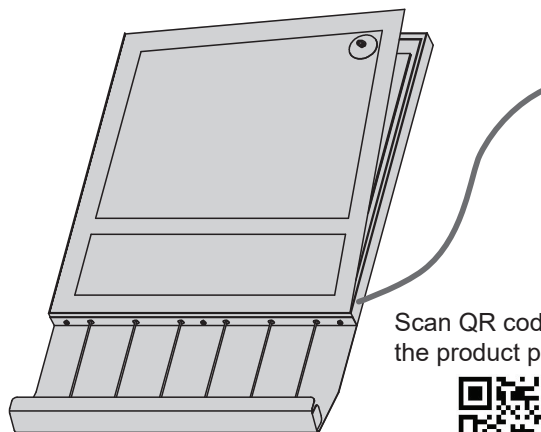
**STEP5**

Fit the printed graphic inside the frame and hold it in place.



**STEP6**

Replace the lens back on the light box. The assembly is finished.



Scan QR code to visit the product page:

