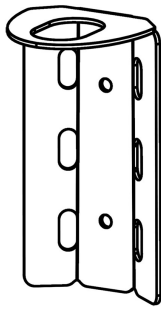


Parts List:



X1



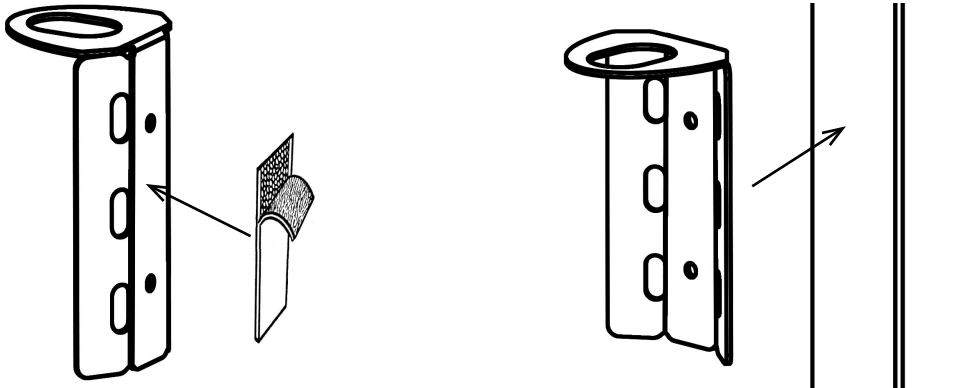
X1

Weight Capacity:

5 lbs. Maximum

1. Attach the bracket to the side edge of the digital signage device.

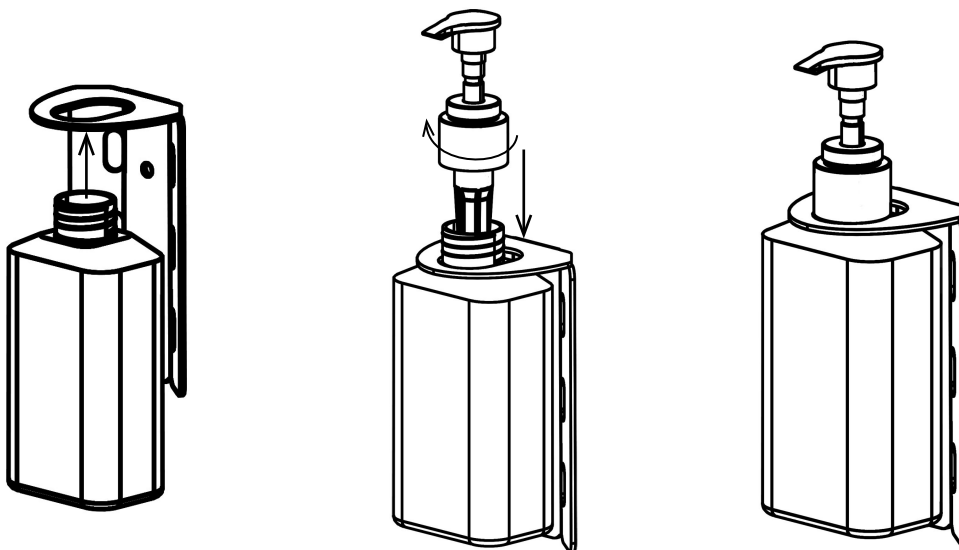
- Peel the release film from the hook side (hook and loop fastener) and attach to the back side of the bracket.
- Peel the release film from the loop side (hook and loop fastener) and attach to the desired height of the side edge of the digital signage device.



Wall Mounting Option: Use 2 holes in backside of bracket for wall mounting. Hardware not included.

2. Fix the sanitizer dispenser onto the bracket.

- Unscrew dispenser cap from the bottle.
- From the underside of the bracket push the neck of the bottle through the opening.
- From the top side of the bracket insert the dispenser cap into the bottle and screw down to lock in place.



Scan QR code to visit the product page:

